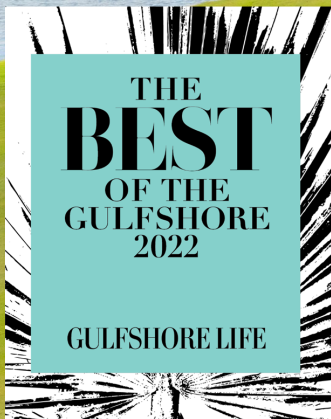




Rental Membership Program
2026-2027



Be Our Guest in Paradise

Having repeatedly won local and national awards for the beauty and maintenance of its grounds and common areas, Eagle Creek Golf and Country Club is a small, private gated community centrally located between Naples & Marco Island. Founded in 1984, Eagle Creek is 100 percent built-out with 458 residential units, including single family homes, villas and condominiums on 300 acres of cypress, pine and palm trees. The community's small size makes it truly unique in the Naples area, where residential golf course communities are regularly sized between 750 and 5,000 residences.

Because of its intimate size and exclusiveness, Eagle Creek residents enjoy ready access to club facilities, amenities and unforgettable hospitality from long-tenured and dedicated staff. Eagle Creek truly feels like a neighborhood, and the membership is close-knit and friendly.

We welcome you to be our guest in paradise as you experience 40+ years of Eagle Creek heritage. Discover why scores of residents' guests, family, and non-resident golfers have chosen to become part of the Eagle Creek lifestyle.



GulfShore Life Magazine

Since 2018

Nominated Naples only Golf & Country Club for Best Tennis Facility & Awarded Best Golf Course

Since 2019

Best Tennis Facility in Naples



Eagle Creek Mission Statement:

Eagle Creek Golf & Country Club is dedicated to providing enjoyment to our members and their guests - in our intimate gated residential community - by offering first rate facilities and high-quality services in a fiscally responsible manner.

The Right Membership For You

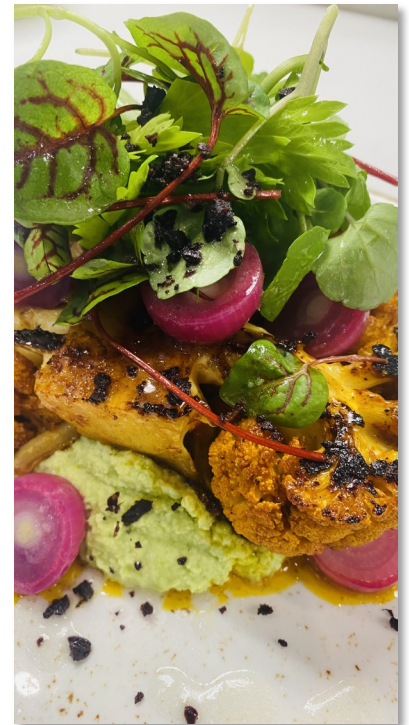
The Golf Rental Membership

A Golf Rental Plan grants the renter use of all club amenities including:

- Online Dining & Social Reservation System
- 18 Hole, Par 72 Championship Golf Course
 - Driving Range & Putting Greens
 - Men's/Ladies' Locker Rooms
 - Clubhouse Grille Room and Bar
 - Crystal Lake Café and Bar
- Club Organized Social & Dining Events
 - Spa Services
- Tennis, Sports & Fitness Complex
 - 5 Har-Tru Tennis Courts
 - 4 Har-Tru Pickleball Courts
 - Tennis Classes & Clinics
 - 3 Grass Regulation Bocce Courts
- Junior Olympic Sized Pool and Whirlpool

**Additional fees may apply to fitness, spa and tennis amenities. Please contact the Communications & Member Director for additional information.*

To encourage renters to become a part of the membership at Eagle Creek, the Golf & Social Rental Plans are limited to three (3) years with a maximum lease term of 6 months.



The Right Membership For You

The Golf Rental Membership

\$3,000 + Tax Per Month Couple

***Golf Rental Membership only available for properties with a Golf Equity.**

***Limited Golf Rental Membership is available for \$1,000+ tax per month.**

Please inquire for more information.

Enjoy Eagle Creek Golf & Country Club like a member. The Golf Rental Membership grants you access to all club amenities, including fitness, spa, bocce and social events.

Warm up at our state-of-the-art practice facility or improve your swing with one of our PGA Golf Professionals.



To encourage renters to become a part of the membership at Eagle Creek, the Golf & Social Rental Plans are limited to three (3) years with a maximum lease term of 6 months.



The Right Membership For You

The Social Rental Membership

\$1,000 + Tax Per Month

A Social Rental Plan grants the renter use of the following club amenities:

- Men's/Ladies' Locker Rooms
- Clubhouse Grille Room and Bar
- Crystal Lake Café and Bar
- Club Organized Social & Dining Events
 - Spa Services
- Tennis, Sports & Fitness Complex
 - 5 Har-Tru Tennis Courts
 - 4 Har-Tru Pickleball Courts
 - Tennis Classes & Clinics
- 3 Regulation Grass Bocce Courts
- Junior Olympic Sized Pool and Whirlpool

**Additional fees may apply to fitness, spa and tennis amenities. Please contact the Communications & Member Relations*



Social Renters are permitted to play golf as the Guest of a Golf Member a max. of six (6) times in a calendar year

Fees are billed 30 days in advance to the renters club account



From Recreation To Relaxation

Eagle Creek Golf & Country Club is dedicated to providing members, renters and their guests with a superlative private club experience through outstanding amenities and unmatched personalized service. From our stunning championship golf course to our tennis courts, pool, fitness and banquet amenities, we offer a luxurious oasis for recreation and relaxation.



Looking For a Lesson?

Our Tennis Director offers private or group lessons for players of all abilities.

Whether you're searching to fine tune your game or pick up a new sport, our Tennis Directors experience and passion for teaching, shows true on the court.

For rates and inquires, please call The Tennis Shop at (239) 775 - 2642.

Eagle Creek's 5 Har-Tru tennis courts provide numerous opportunities for competitive or social play for players of all abilities, with a talented team of USPTA-certified teaching professionals available for lessons and clinics.



From Recreation To Relaxation

The Crystal Lake Fitness Complex

The Crystal Lake Fitness Center is equipped with top-of-the-line Cybex fitness equipment. In addition, you will find free weights, select rise machines, pneumatic air pressure machines, aerobic machines such as treadmills, ellipticals and open stride machines, and both recumbent and expresso bikes.



Included in the Rental Membership Program, The Crystal Lake Fitness Complex also offers Massage Therapy and Group Classes by licensed professional instructors.

Fitness Classes Include: Stretch & Balance, Chair Yoga, Multilevel Yoga, Restorative Yoga, Yoga, Gentle Yoga, Beginner Yoga, Total Conditioning. Water Aerobics & Tai Chi.



The Crystal Lake Cafe

Savor island-inspired fare featuring fresh seafood meaty ribs or just a refreshing handcrafted cocktail, while lounging in the beautiful Southwest Florida sunshine with friends and family. Speak 'Paradise' in a stress-free, casual



Share Your Experience

We're so glad you've chosen Eagle Creek and are proud to welcome your friends and family to share in your experience.

We love to see people from around the world calling our beautiful club "home," even if only for a few nights. To ensure everyone at Eagle Creek has the most enjoyable experience, please take a moment to understand our guest policies.

And, of course, feel free to reach out to us at (239) 793-0500 if you have questions or concerns. Most importantly, enjoy your stay!

**Host Renter is responsible for all conduct*

Day Guest

An individual hosted by the renter for the day. Renters are prohibited from hosting a Day Guest if the host renter is not present.

- A Day Guest may utilize either the golf or tennis facilities a maximum of six (6) times each from November 1st - April 30th per year
- Guest usage fees and purchases are charged to the host renters account or paid by credit card.

Family Guest

Immediate family (Child, grandchild, great grandchild, parent, sibling and spousal equivalent):

Approval needed for Family Guests residing longer than two weeks

- Unlimited use of club facilities with usage fees charged to host renters membership account or paid by credit card

House Guest

• An individual, who is not a family guest, temporarily residing with an approved Eagle Creek Renter.

Approval needed for Houseguests residing longer than two weeks

- The host renter must register a House Guest in the Administrative Office. Please call (239) 793-0500 for more information
- A House Guest must be accompanied by the host renter to use the golf and tennis facilities a max. of 6 times per year
- Guest usage fees and purchases are charged to the host renters account or paid by credit card.

Share Your Experience

<u>Golf - In Season Guest</u>	<u>Green Fee</u>	<u>Cart Fee</u>
Family Guest 18 Hole	\$70.00+ sales tax	\$31.00+ sales tax
Family Guest 9 Hole	\$55.00+ sales tax	\$22.00+ sales tax
Guest 18 Hole	\$165.00+ sales tax	\$31.00+ sales tax
Guest 9 Hole	\$110.00+ sales tax	\$22.00+ sales tax
After 1:00 PM	18 holes-\$135.00 +sales tax	18 holes - \$31.00 +sales tax
After 1:00 PM	9 holes - \$90.00 +sales tax	9 holes - \$22.00 +sales tax
<u>Choose to walk at anytime (Greens fees as noted above)</u>		
Electric Push Cart:	18 holes- \$30.00+ sales tax	9 holes- \$21.00+ sales tax
Walking Fee/Manual Push Cart	18 holes - \$23.00+sales tax	9 holes - \$14.00+ sales tax
*Fees subject to change without notice.		

<u>Tennis & Sports Complex</u>	<u>In Season</u>
Tennis Guest	\$10.00+ sales tax
Tennis Day Round Robin	\$8.00+ sales tax
Fitness Class Guest (1 hr.)	\$10.00+ sales tax
Massage: \$110 price includes tax and gratuity. Schedule online/mobile app or 239-793-0500 ext. 152	
*Fees subject to change without notice.	



Frequently Asked Questions

Have a quick question? To better communicate with the member, renters and guests of Eagle Creek, we've compiled useful information into a frequently asked question section. For more information, call the Eagle Creek Administration Office at (239) 793-0500.

If I rented in Eagle Creek last year, do I need to complete rental paperwork?

Yes! In order to update rental records, all required documents must be submitted for approval thirty (30) days prior to each stay at Eagle Creek.

Is it mandatory to choose a Social or Golf Rental Membership Plan?

Yes! We encourage all members, renters, and guests to utilize our award-winning amenities. This requires each renter within Eagle Creek to choose a membership plan.

Does Eagle Creek prorate the rental membership?

After a thirty (30) day stay, additional stays from 1-15 days would receive a credit for a half month of the rental membership. 16+ days are required to pay for the full month's membership.

How will I be billed for my monthly rental membership?

The monthly rental membership, either Social or Golf, is charged to the renter's club account thirty (30) days in advance. This account is connected to the credit card listed on the Rental Membership Application.

Can I play golf with Social Rental Membership?

Renters interested in playing golf are encouraged to reach out for more information to (239) 793-0500

How many people can I have on my Rental Membership Plan?

One (1) person and spousal equivalent are allowed per membership plan. Multiple families or friends **may not** rent one unit.

What are Eagle Creek's hours of operation?

Due to the seasonality of Eagle Creek, please call (239) 793-0500 or refer to our website: EagleCreekGCC.org for updated hours of operation.

How do I make a dining reservation, tee time or reserve a tennis court?

Reservations, tee times and tennis courts can be reserved online at EagleCreekGCC.org or by calling (239) 793-0500.

Eagle Creek Achievements



Florida Trend's 2019 **BEST COMPANIES**
TO WORK FOR IN FLORIDA




In 2019, Eagle Creek hosted the only local U.S. Open Qualifier in Southwest Florida. In addition, we were chosen by world renowned artist, Graeme Baxter, as he unveiled his rendition of Eagle Creek's Famous Finishing Hole #18.

In August of 2019, Florida Trend Magazine has named Eagle Creek one of the 'Top 100 Best Places to Work in Florida'. We are the very first and only country club to appear on the Florida Trend magazine list.

Supporting the Eagle Creek Team through healthy meals, active lifestyle options and a thriving workplace atmosphere, we are proudly certified as a Blue Zone Workplace.

Using an 'organic-first' approach on our golf course, Eagle Creek is a proud Audubon Cooperative Sanctuary, featuring numerous bird boxes and osprey nests.



LIKE 
SHARE
& FOLLOW



11 Cypress View Drive
Naples, FL. 34113
(239) 793-0500